

Phone: +385 1 6259 373
+385 1 6259 589
+385 1 6259 372
Fax: +385 1 6259 374
AFS: LDZAYOYX
Email: aip@crocontrol.hr
URL: <http://www.crocontrol.hr>



**HRVATSKA KONTROLA
ZRAČNE PLOVIDBE**

Hrvatska kontrola zračne plovidbe d.o.o.
Odjel zrakoplovnog informiranja
Rudolfa Fizira 2
10410 Velika Gorica, p.p. 103
Hrvatska

AIP SUP 014/2019

Na snazi od: 05-Dec-2019

Vrijedi do: UFN

Datum izdavanja: 24-Oct-2019

Zamjena RJK VOR/DME-a, utjecaj na postojeće LDRI i LDPL instrumentalne postupke tijekom leta i objava privremenih LDRI instrumentalnih postupaka tijekom leta

1. Uvod

Od 05 DEC 2019 do UFN, izvodit će se radovi na zamjeni RJK VOR/DME-a. Tijekom ovog razdoblja, RJK VOR/DME biti će izvan upotrebe.

2. Utjecaj na instrumentalne postupke tijekom leta

U razdoblju dok je ovaj AIP SUP na snazi i RJK VOR/DME neispravan, sljedeći postupci objavljeni u AIP-u privremeno su suspendirani. Postupci objavljeni u AIP-u koji nisu suspendirani ovim AIP SUP-om mogu se normalno koristiti.

LDPL - PULA/Pula - suspendirani postupci

SID RWY 09: RJK 4C (karta LDPL AD 2.24.8 SID RWY 09-1, WEF 28 MAR 2019);

SID RWY 27: RJK 3D (karta LDPL AD 2.24.8 SID RWY 27-1, WEF 28 MAR 2019);

STAR RWY 09/27: GEMKA 4A, KULEN 3F (karta LDPL AD 2.24.10 STAR RWY 09/27-1, WEF 28 MAR 2019).

LDRI - RIJEKA/Krk I. - suspendirani postupci

SID RWY 14: ALIVO 3C, KULEN 3C, CRE 4H, PUL 3R, NAKIT 3C (karta LDRI AD 2.24.8 SID RWY 14-1, WEF 28 MAR 2019);

SID RWY 32: ALIVO 3D, KULEN 3D, CRE 4G, PUL 3L, NAKIT 3D (karta LDRI AD 2.24.8 SID RWY 32-1, WEF 28 MAR 2019);

STAR RWY 14/32: KULEN 4A (karta LDRI AD 2.24.10 STAR RWY 14/32-1, WEF 28 MAR 2019).

IAP: L RWY 14 (karta LDRI AD 2.24.12 IAC L RWY 14-1, WEF 28 MAR 2019);

VOR RWY 14 (karta LDRI AD 2.24.12 IAC VOR RWY 14-1, WEF 28 MAR 2019);

ILS or LOC RWY 14 (karta LDRI AD 2.24.12 IAC ILS or LOC RWY 14-1, WEF 28 MAR 2019);

Lz RWY 32 (karta LDRI AD 2.24.12 IAC Lz RWY 32-1, WEF 28 MAR 2019);

VOR RWY 32 (karta LDRI AD 2.24.12 IAC VOR RWY 32-1, WEF 28 MAR 2019).

MSA: RJK VOR/DME.

3. Privremeni LDRI instrumentalni postupci tijekom leta

U razdoblju dok je RJK VOR/DME neispravan, sljedeći privremeni LDRI instrumentalni postupci tijekom leta objavljeni u ovom AIP SUP-u bit će na snazi:

SID RWY 14: CRE 5H, PUL 4R.

SID RWY 32: CRE 5G, PUL 4L.

IAP: ILSz or LOCz RWY 14.

Upišite AIP SUP 014/2019 u GEN 0.3.

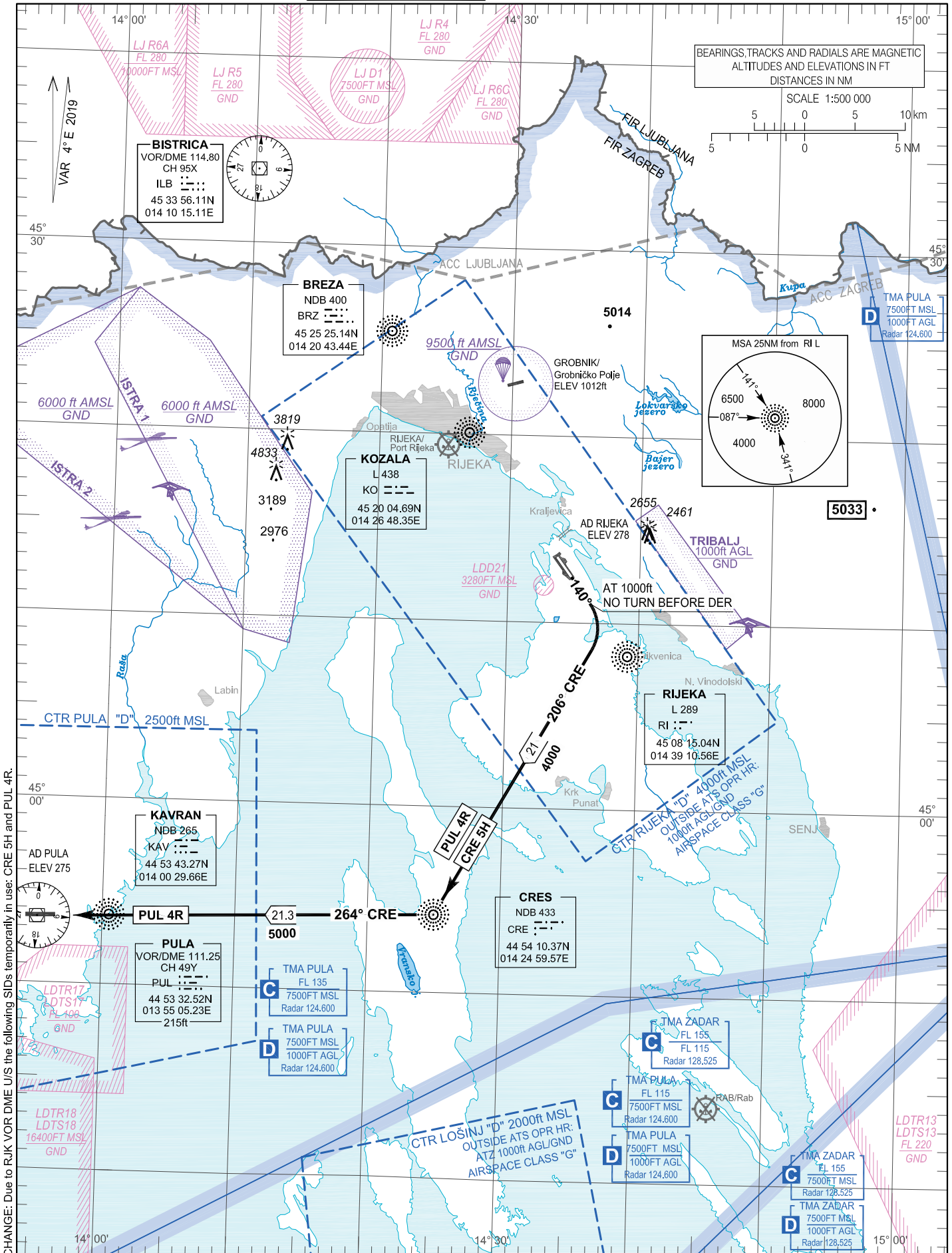
REF AIP: LDPL AD 2, LDRI AD 2, ENR 3, ENR 4.

STANDARD DEPARTURE CHART -
INSTRUMENT (SID) - ICAO

TRANSITION ALTITUDE
10 000

RIJEKA TOWER 119.000
PULA RADAR 124.600

RIJEKA / Krk I.
CROATIA
RWY 14



CHANGE: Due to RJK VOR/DME U/S the following SIDs temporarily in use: CRE 5H and PUL 4R.

RIJEKA / Krk I.

CROATIA

RWY 14

SID RWY 14

GENERAL INFORMATION AND REQUIREMENTS FOR ALL SIDs

- Calculation of the SIDs is based on an all-engines operative minimum net climb gradient of 3.3 per cent (201 FT/NM). Where a greater climb gradient for a specific SID (or part of SID) is necessary, this is indicated in the description of the route.

SID RWY 14

Designator	Route	After take off		Remarks
		Climb initially	Contact	
CRE 5H	CRES FIVE HOTEL DEPARTURE MNM PDG 4.0% (243 FT/NM). Climb straight ahead. At 1000 FT turn RIGHT to intercept QDM 206° CRE climbing to CRE NDB.			No turn before DER
PUL 4R	PULA FOUR ROMEO DEPARTURE MNM PDG 4.0% (243 FT/NM). Climb straight ahead. At 1000 FT turn RIGHT to intercept QDM 206° CRE climbing to CRE NDB. At CRE NDB turn RIGHT to intercept QDR 264° CRE climbing to PUL VOR/DME.			No turn before DER

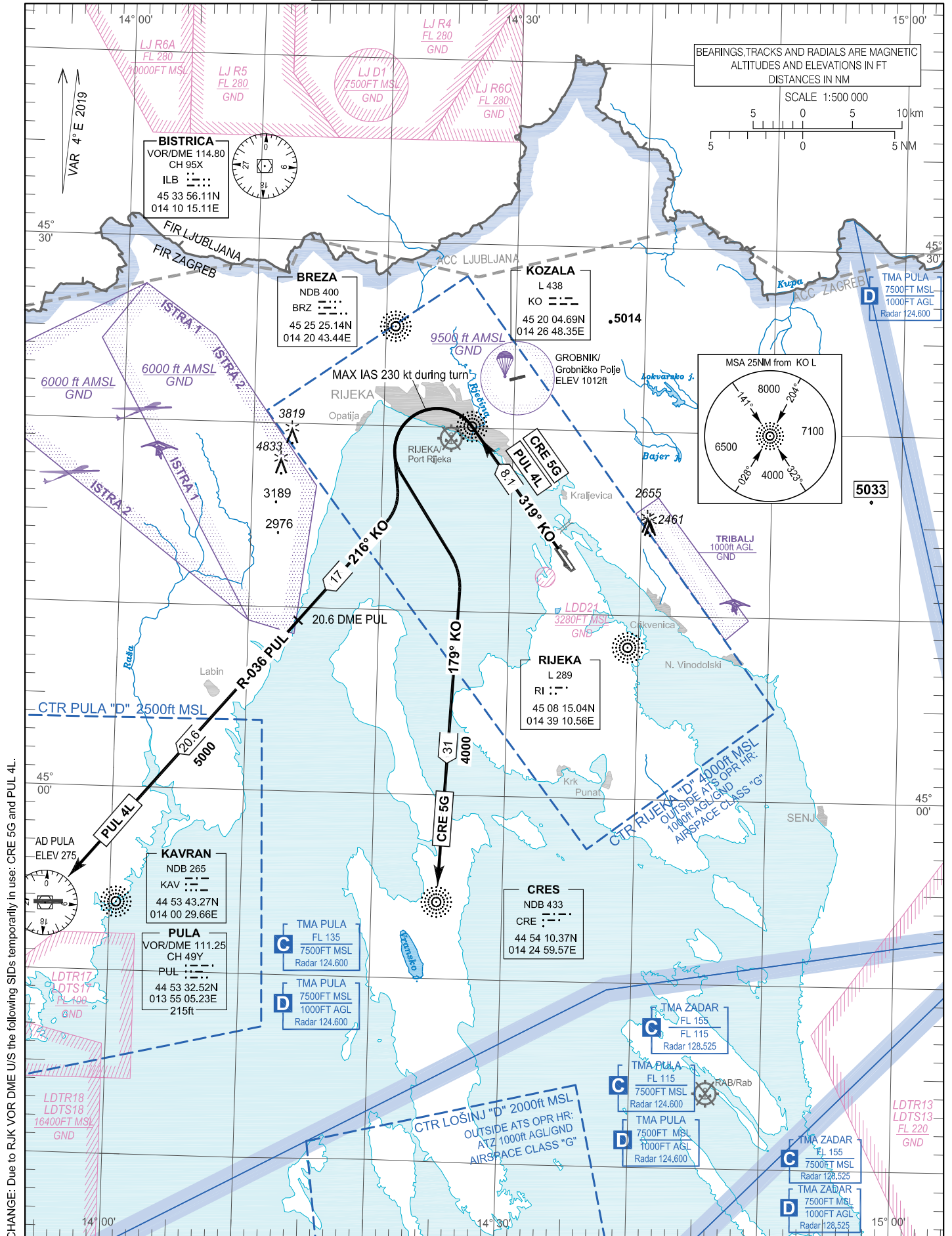
CHANGE: Due to RJK VOR DME U/S the following SIDs temporarily in use: CRE 5H and PUL 4R.

STANDARD DEPARTURE CHART -
INSTRUMENT (SID) - ICAO

TRANSITION ALTITUDE
10 000

RIJEKA TOWER 119.000
PULA RADAR 124.600

RIJEKA / Krk I.
CROATIA
RWY 32



RIJEKA / Krk I.

CROATIA

RWY 32

SID RWY 32

GENERAL INFORMATION AND REQUIREMENTS FOR ALL SIDs

- Calculation of the SIDs is based on an all-engines operative minimum net climb gradient of 3.3 per cent (201 FT/NM). Where a greater climb gradient for a specific SID (or part of SID) is necessary, this is indicated in the description of the route.

SID RWY 32

Designator	Route	After take off		Remarks
		Climb initially	Contact	
CRE 5G	CRES FIVE GOLF DEPARTURE MNM PDG 5.6% (340 FT/NM) to 4300 FT. Climb straight ahead on QDM 319° KO. At KO L turn LEFT (MAX IAS 230 kt during turn) to intercept QDR 179° KO climbing to CRE NDB.			
PUL 4L	PULA FOUR LIMA DEPARTURE MNM PDG 5.6% (340 FT/NM) to 4300 FT. Climb straight ahead on QDM 319° KO. At KO L turn LEFT (MAX IAS 230 kt during turn) to intercept QDR 216° KO. After passing 20.6 DME PUL, continue on R-036 PUL climbing to PUL VOR/DME.			

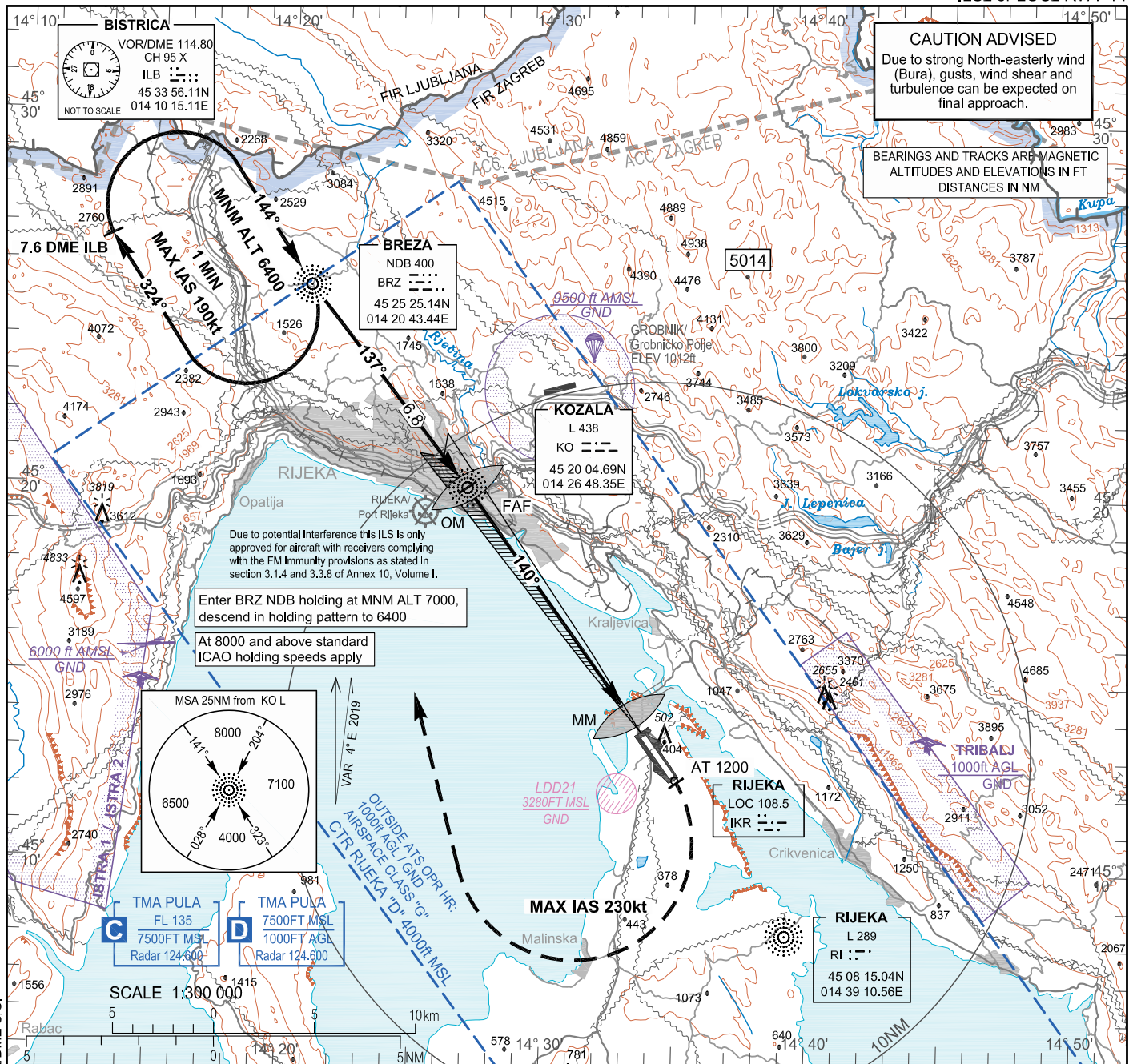
CHANGE: Due to RJK VOR DME US the following SIDs temporarily in use: CRE 5G and PUL 4L.

INSTRUMENT APPROACH
CHART-ICAO

AD ELEV 278
HEIGHTS RELATED
TO THR 14 ELEV 264

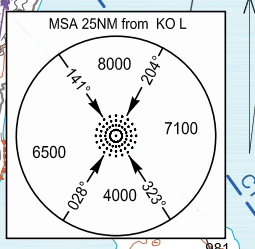
PULA RADAR 124.600
RIJEKA TOWER 119.000

RIJEKA / Krk I.
CROATIA
ILSz or LOCz RWY 14



Due to potential interference this ILS is only approved for aircraft with receivers complying with the FM Immunity provisions as stated in section 3.1.4 and 3.3.8 of Annex 10, Volume I.

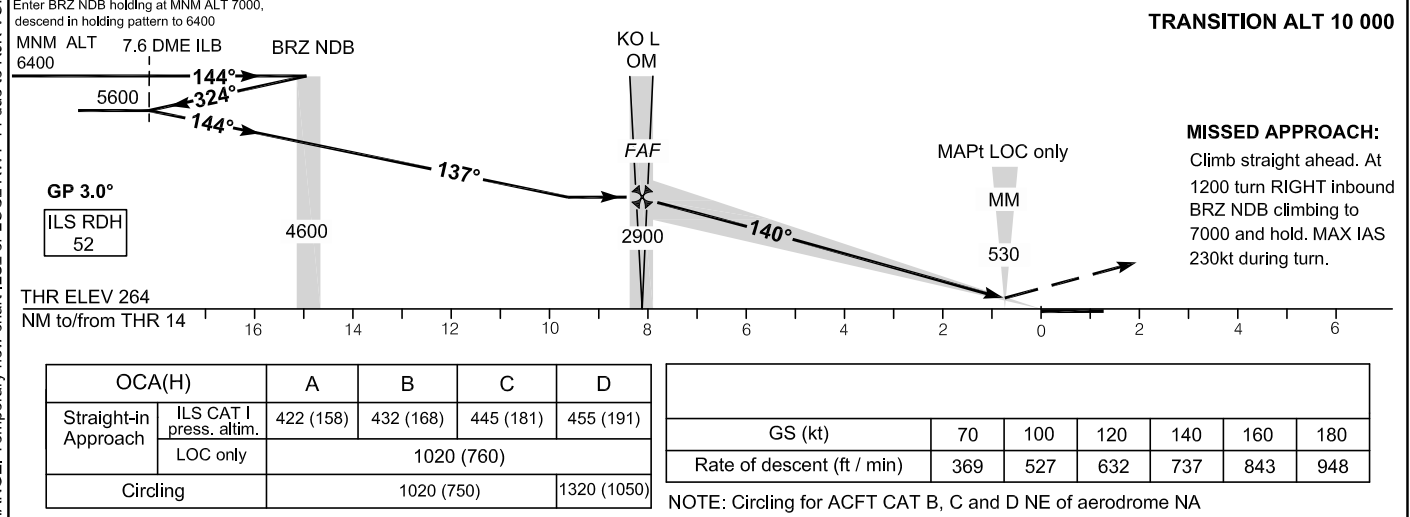
Enter BRZ NDB holding at MNM ALT 7000, descend in holding pattern to 6400
At 8000 and above standard ICAO holding speeds apply



TMA PULA FL 135 7500FT MSL Radar 124.600
TMA PULA 7500FT MSL 1000FT AGL Radar 124.600

SCALE 1:300 000

CHANGE: Temporary new chart ILSz or LOCz RWY 14 due to RJK VOR/DME U/S.



OCA(H)	A	B	C	D
Straight-in Approach	ILS CAT I press. altim. 422 (158)	432 (168)	445 (181)	455 (191)
	LOC only 1020 (760)			
Circling	1020 (750)			1320 (1050)

GS (kt)	70	100	120	140	160	180
Rate of descent (ft / min)	369	527	632	737	843	948

NOTE: Circling for ACFT CAT B, C and D NE of aerodrome NA

RIJEKA / Krk I.
CROATIA
ILS_z or LOC_z RWY 14

AERONAUTICAL DATABASE REQUIREMENTS

AERONAUTICAL DATABASE REQUIREMENTS			
Conventional procedure essential fixes/points			
ILS _z or LOC _z RWY14			
LOC only - final approach descent angle:			2.99°
Fix identification	Coordinates	True bearing or ARC distance providing track	True bearing or distance providing intersection
IAF (BRZ NDB)	See LDRI AD 2.19	-	-
SDF intermediate (BRZ NDB)	See LDRI AD 2.19	-	-
FAF (OM)	See LDRI AD 2.19	143.68° (IKR LOC)	
MAPt LOC only (MM)	See LDRI AD 2.19	143.68° (IKR LOC)	

CHANGE: Temporary new chart ILS_z or LOC_z RWY 14 due to RJK VOR/DME U/S.